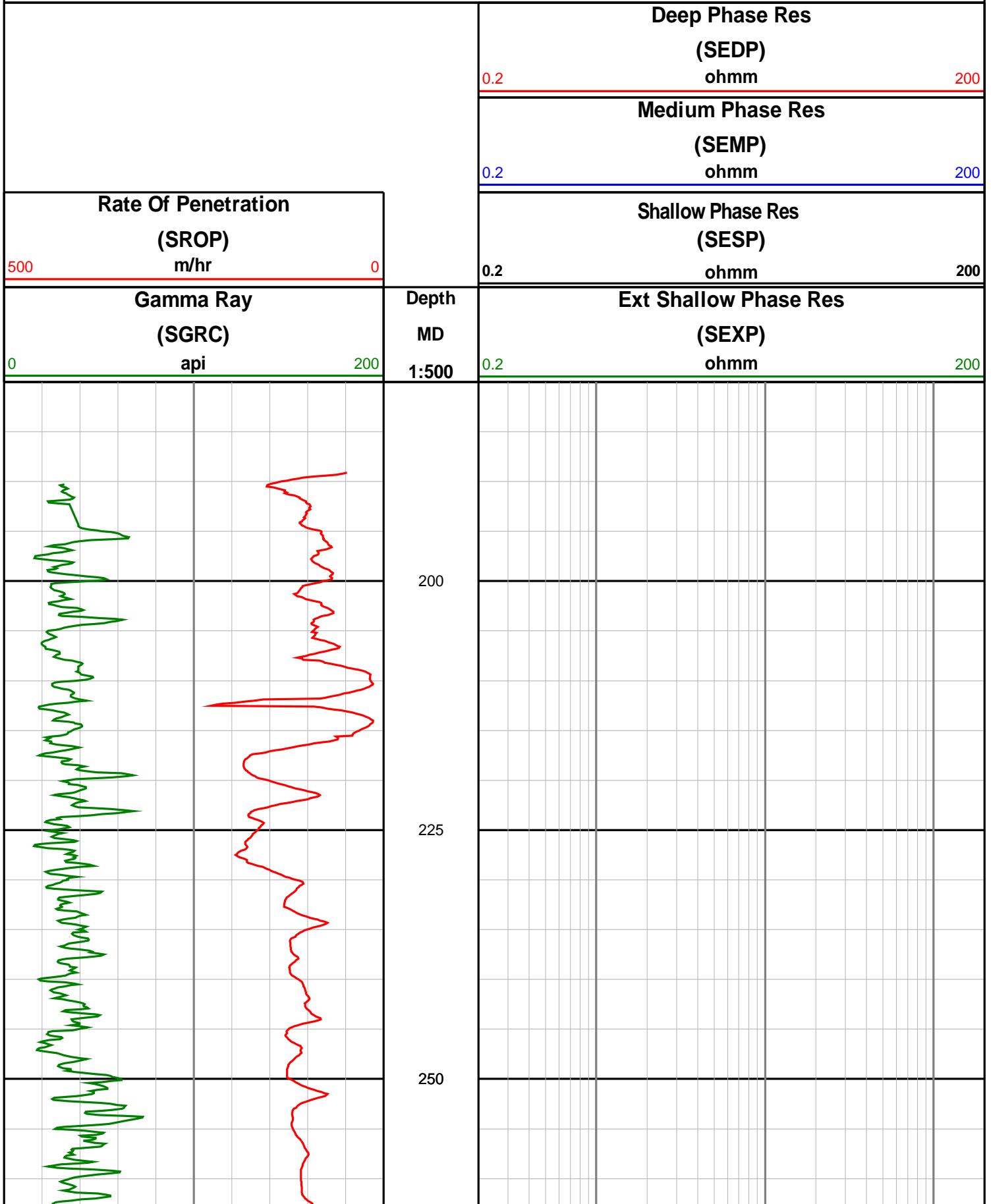
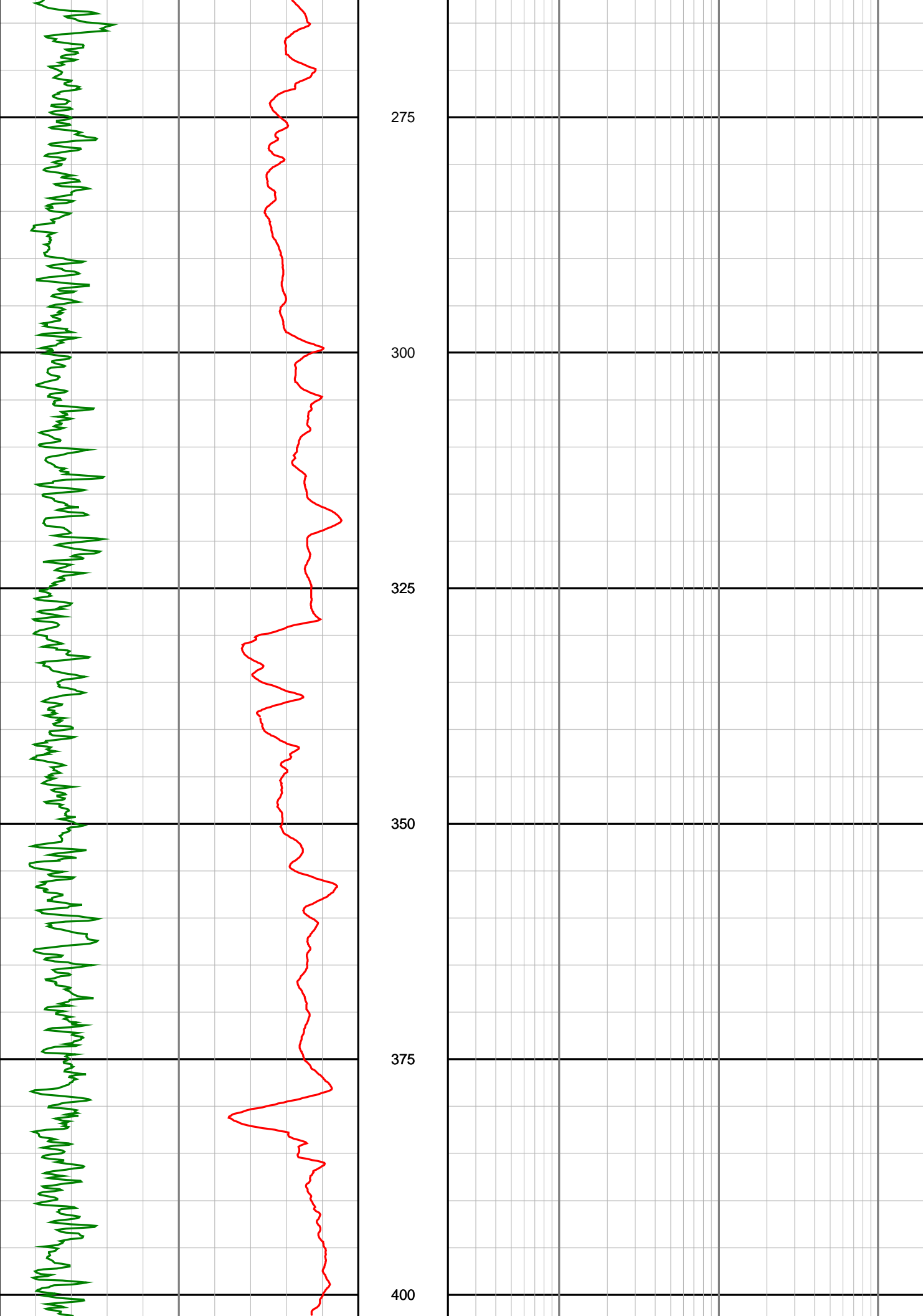


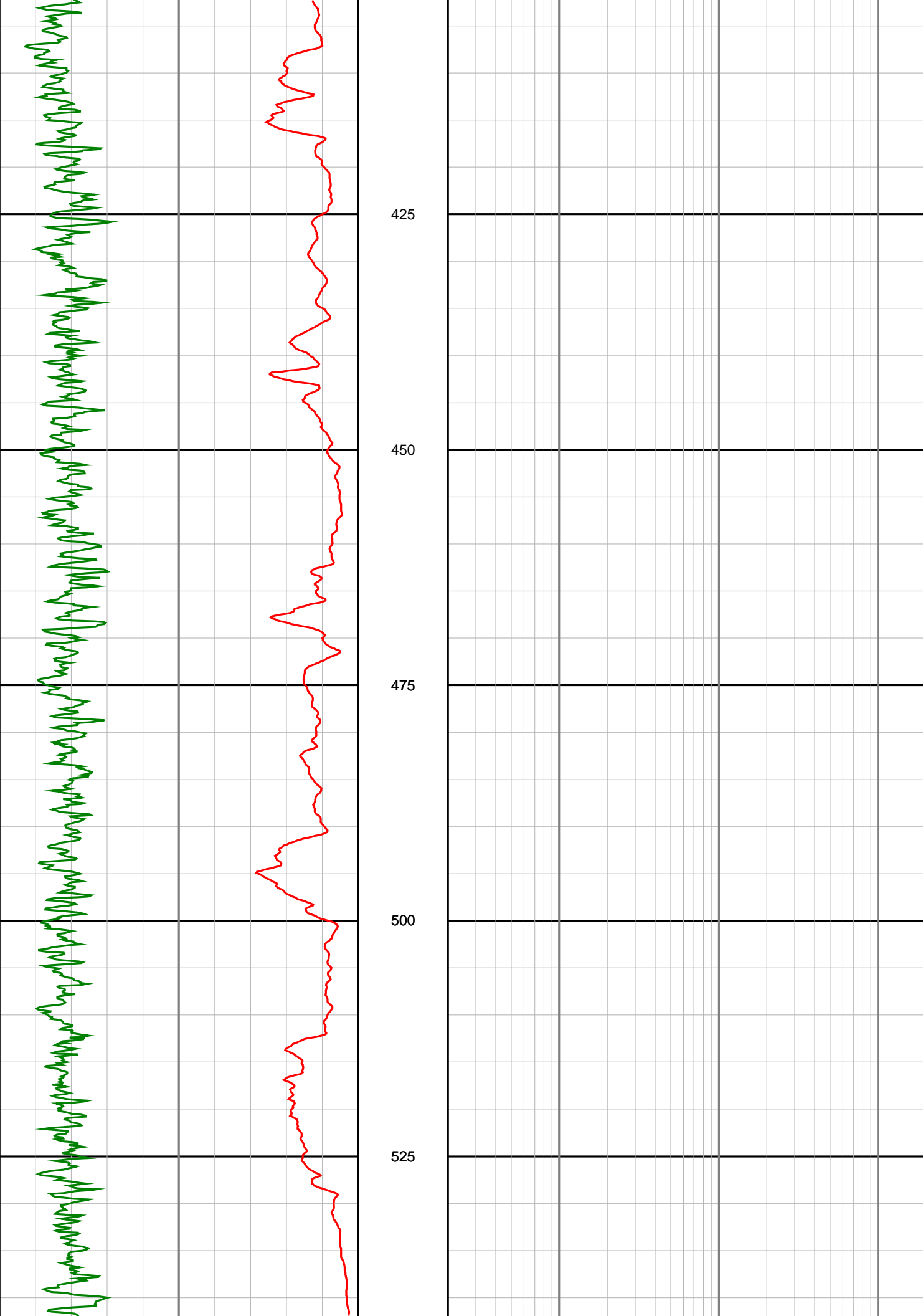
Anzon Australia Ltd

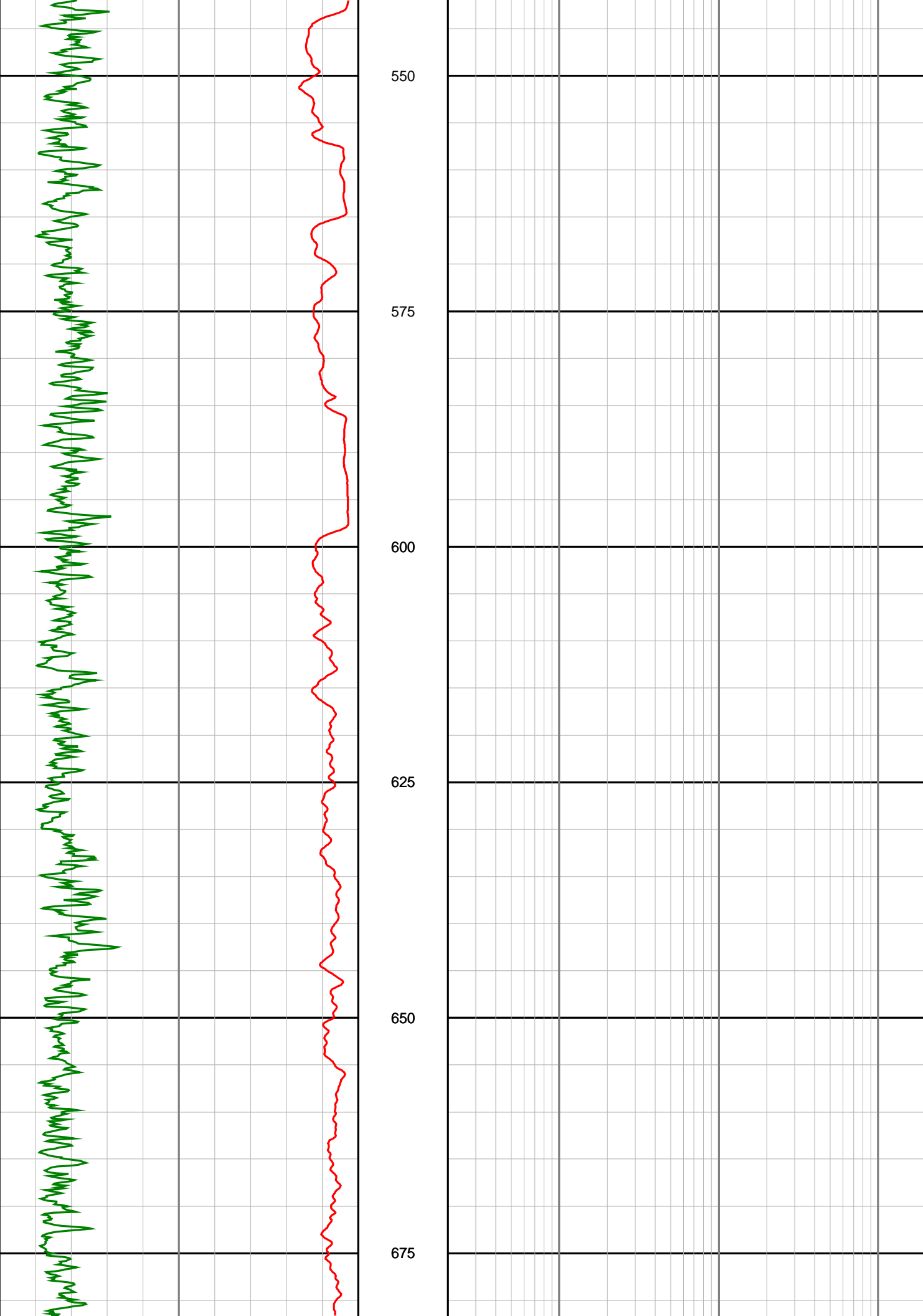
Manta-2A

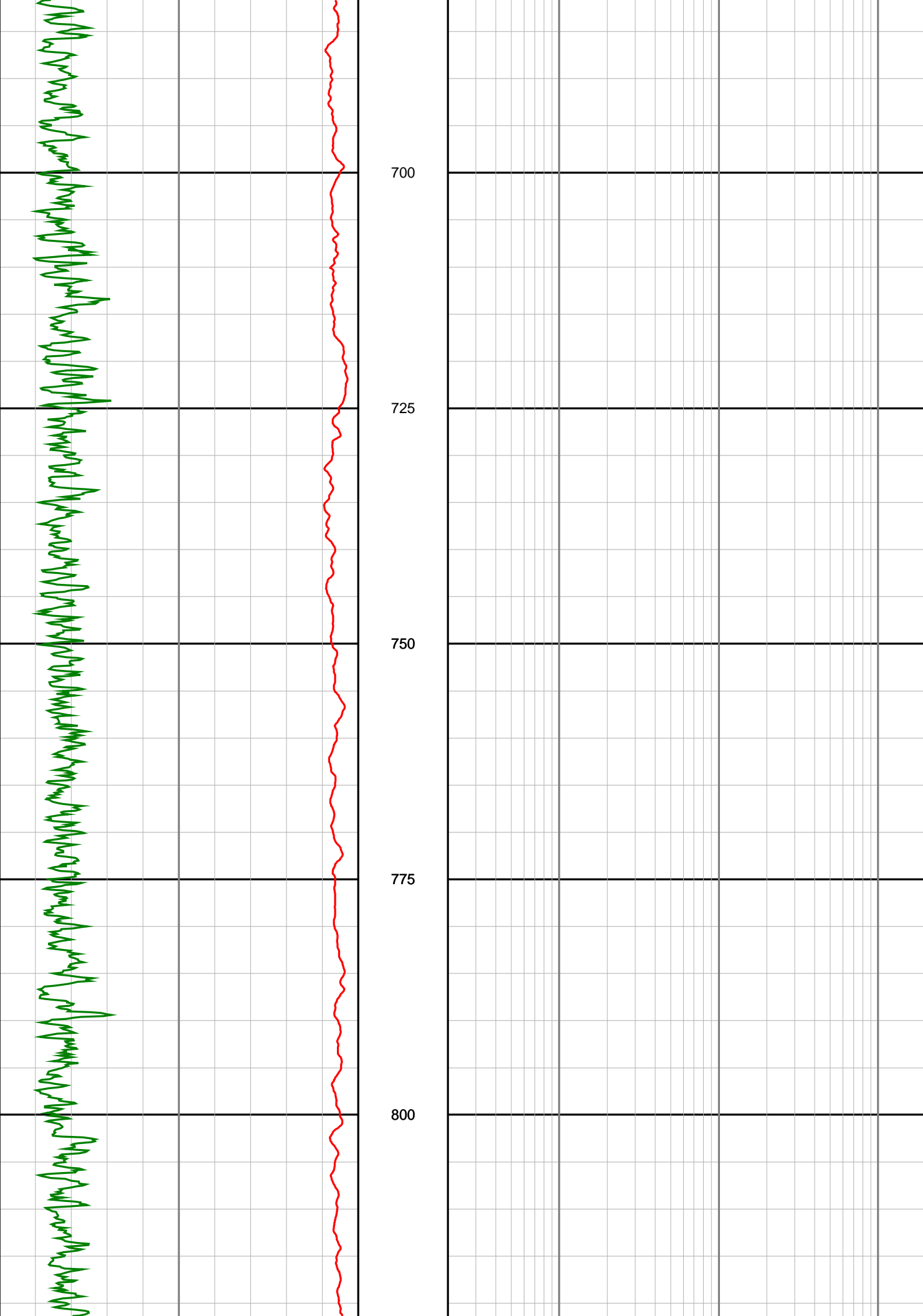
LWD Recorded Log (Permanent Datum - LAT)

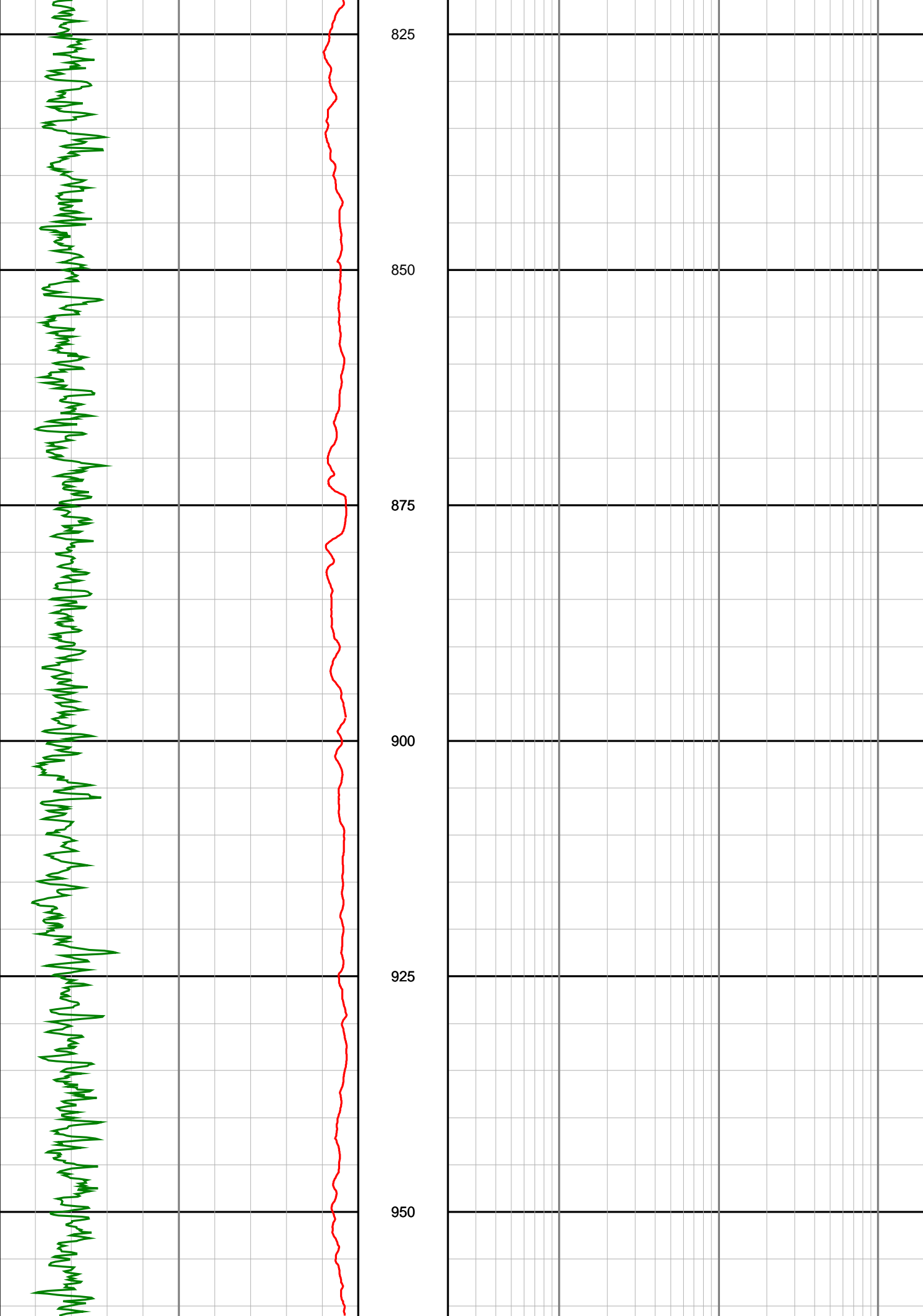


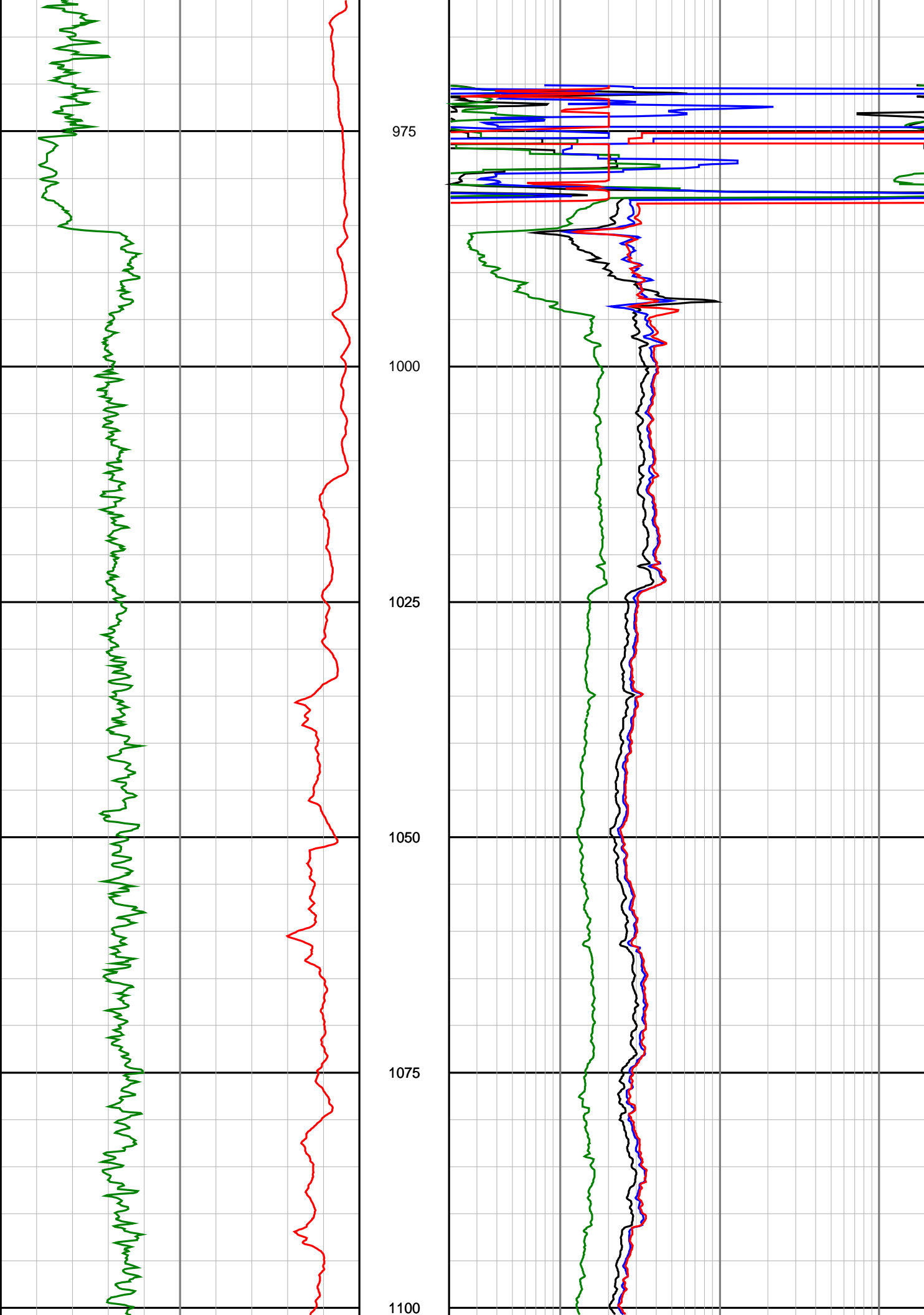


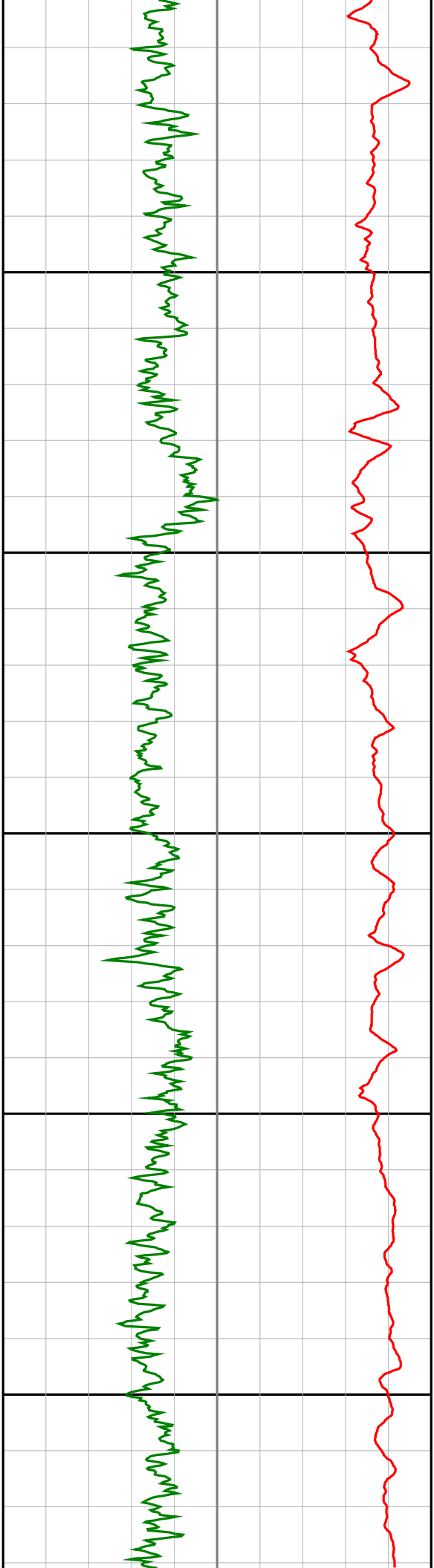












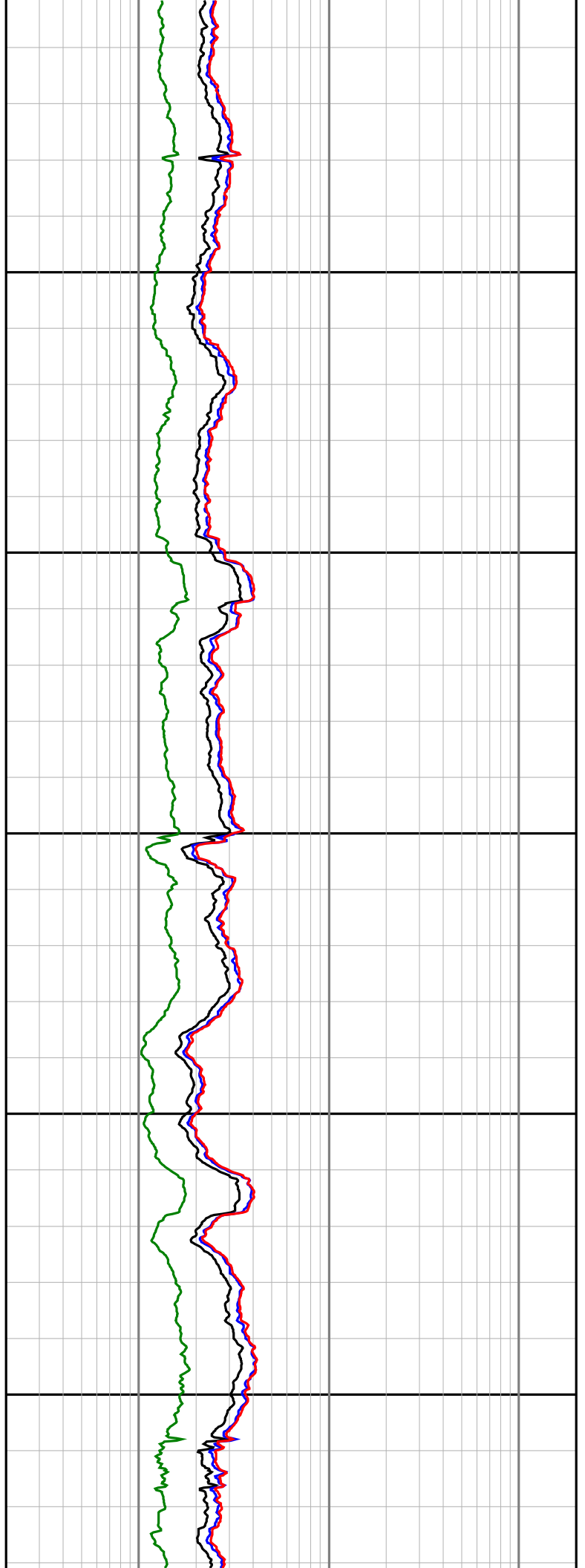
1125

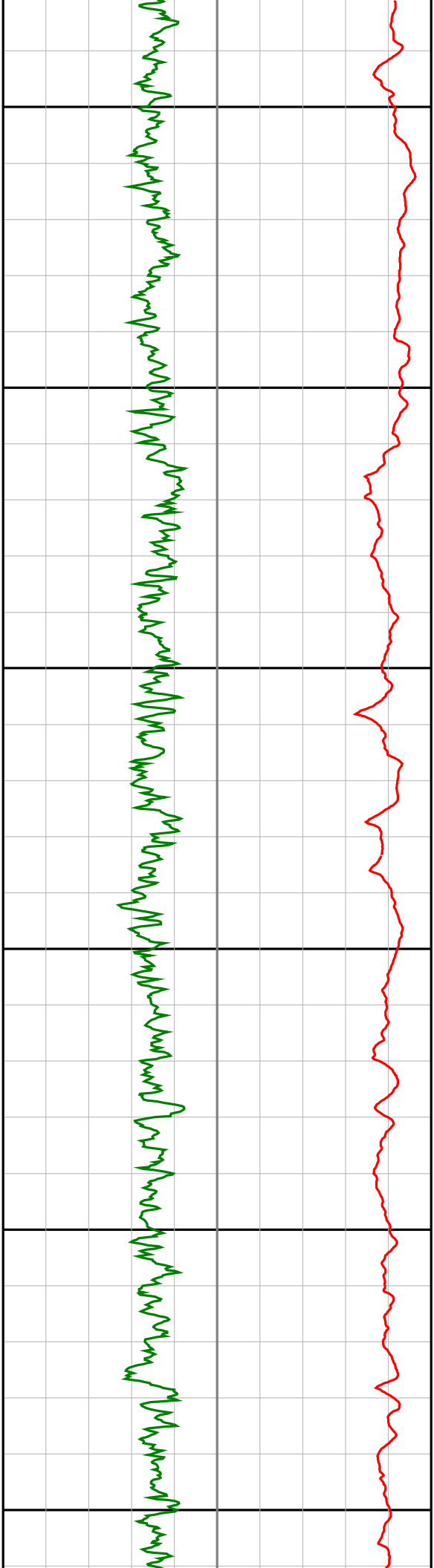
1150

1175

1200

1225





1250

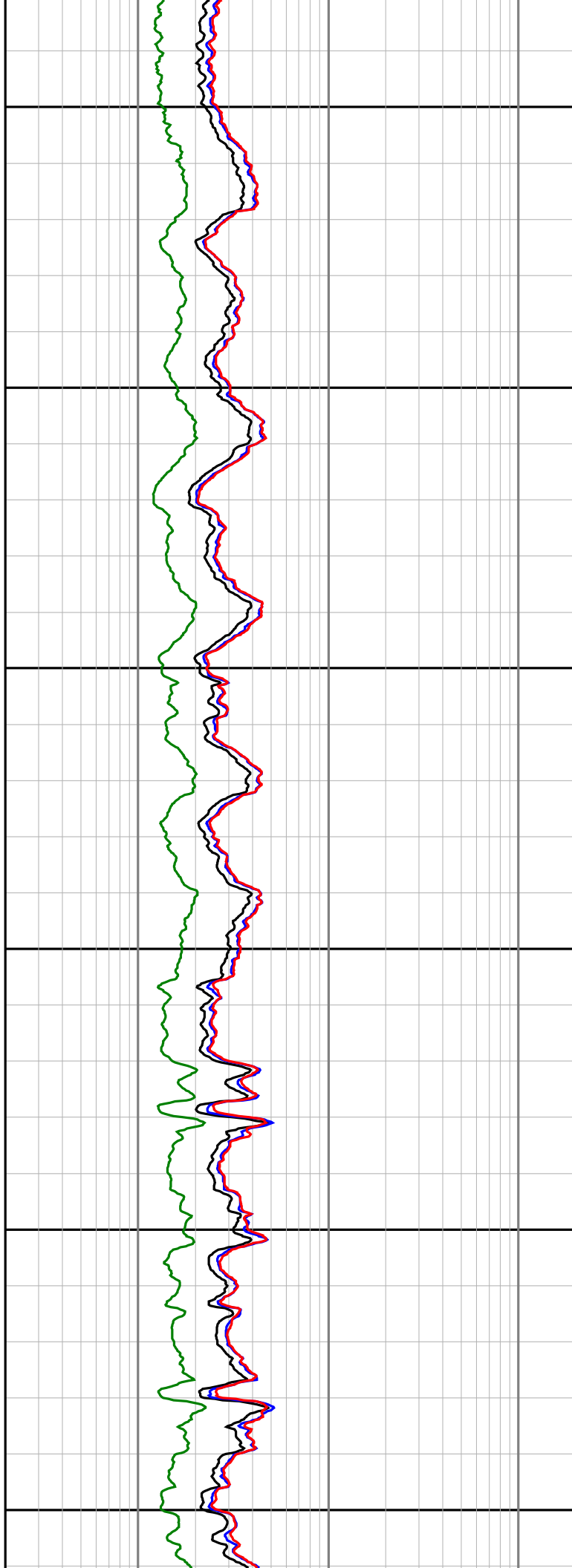
1275

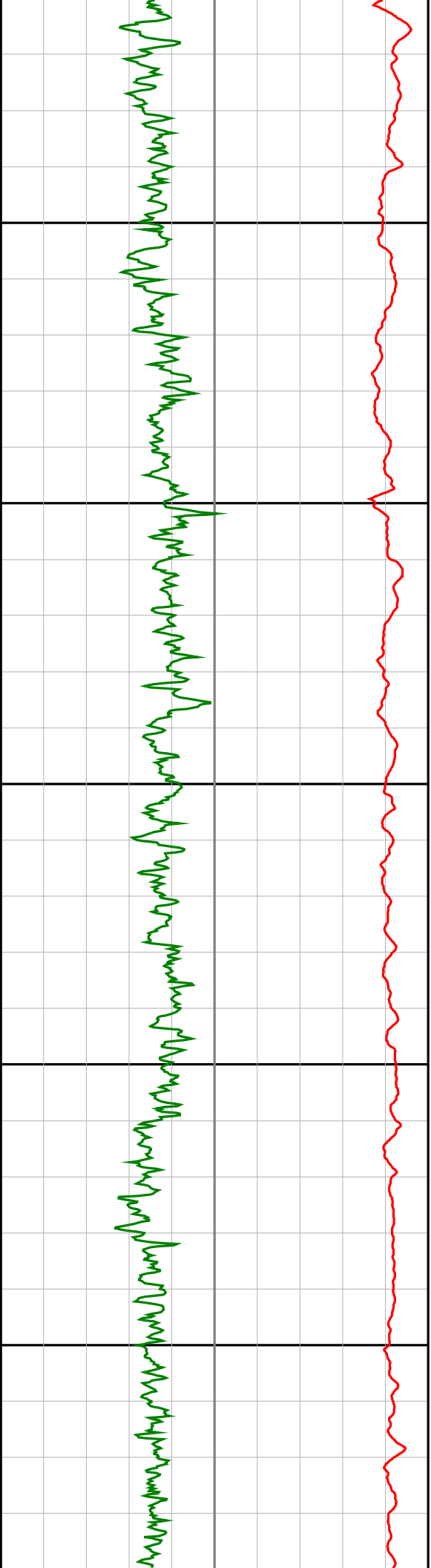
1300

1325

1350

1375





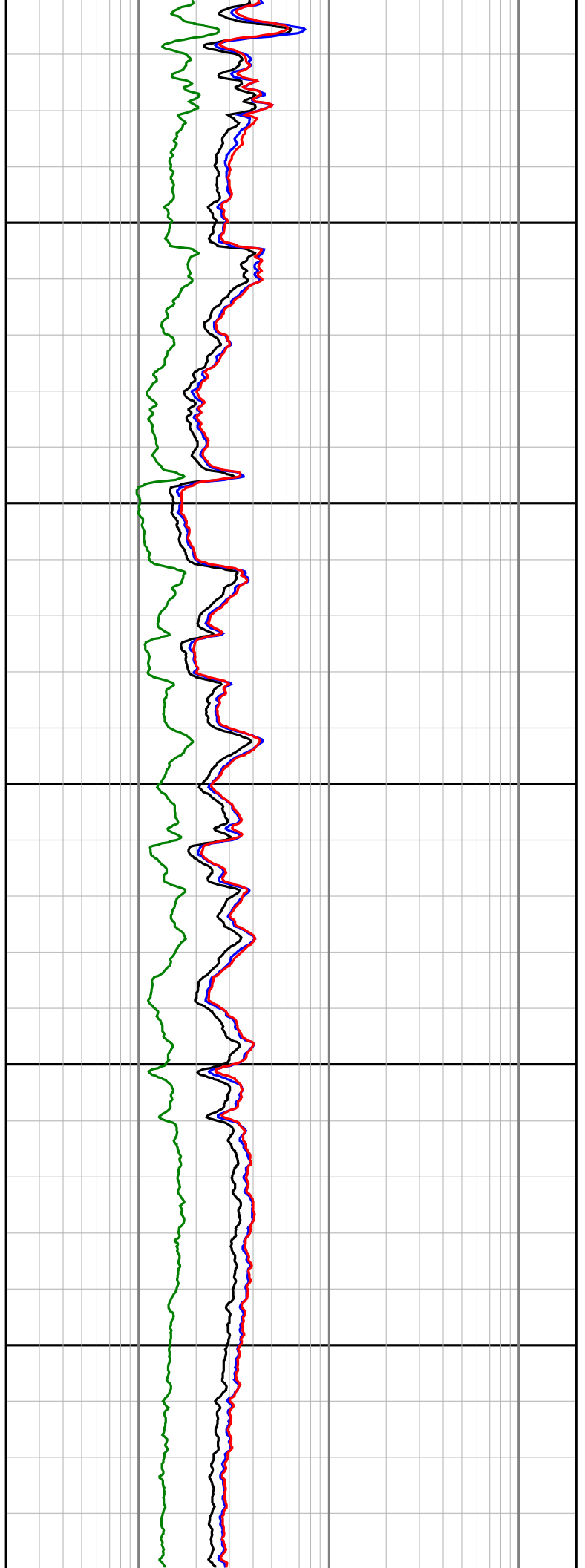
1400

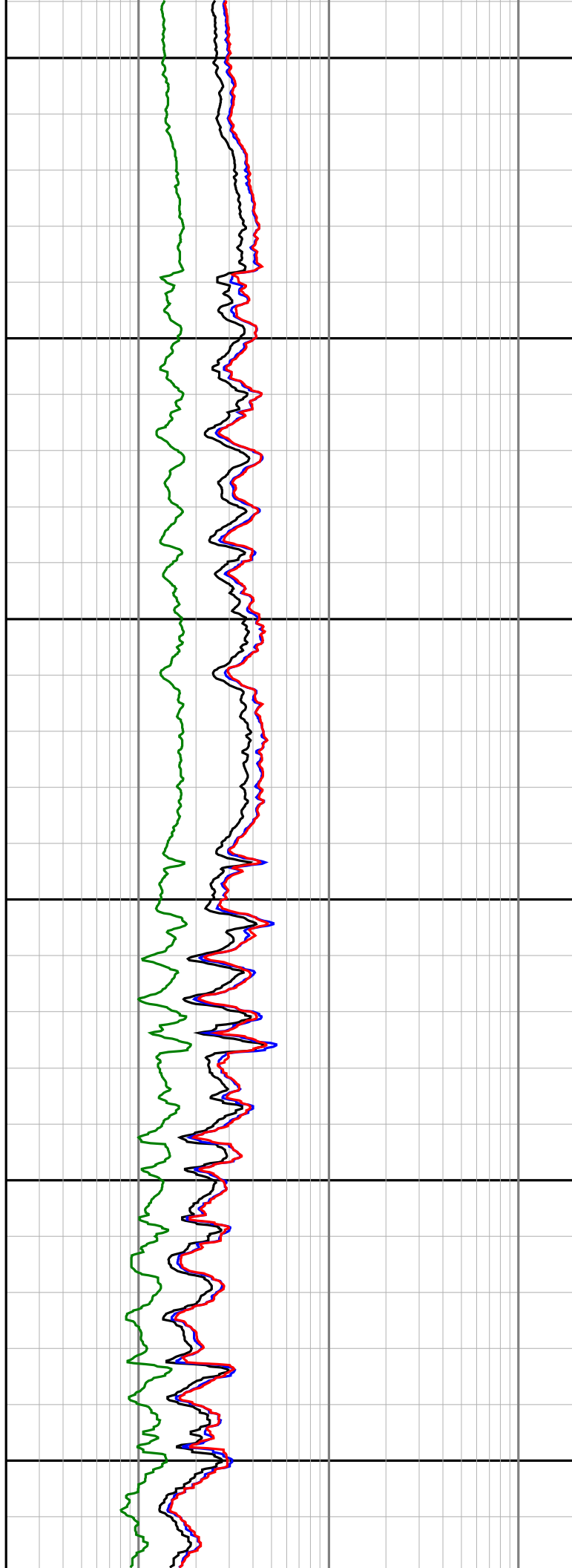
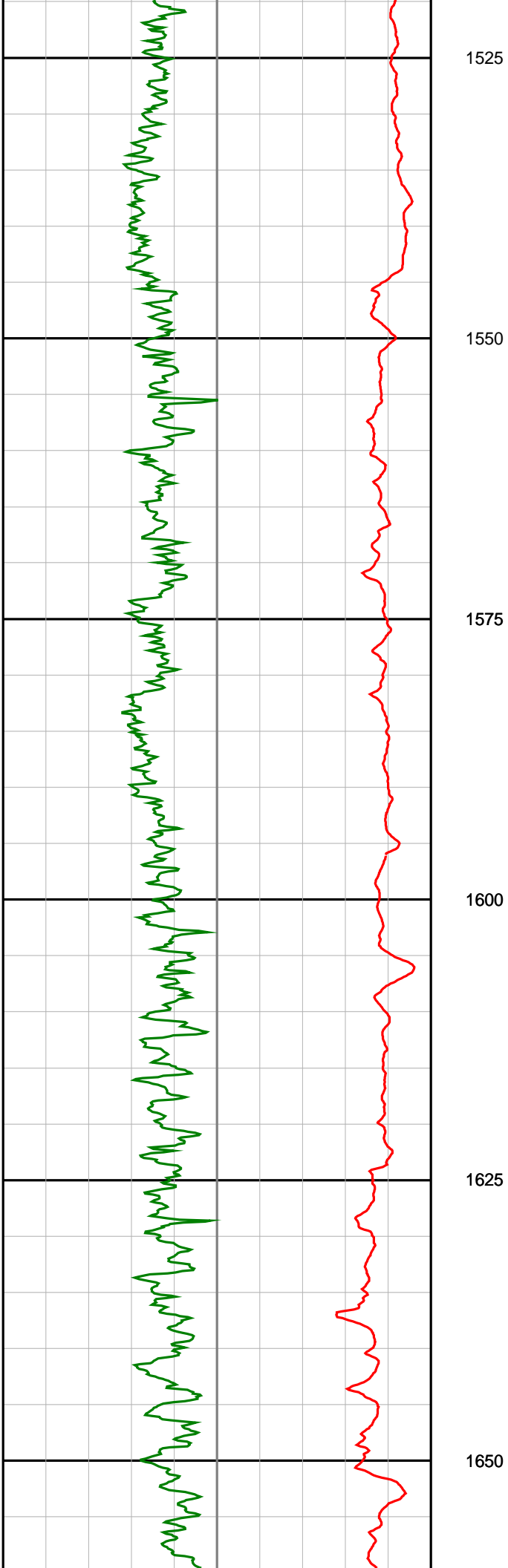
1425

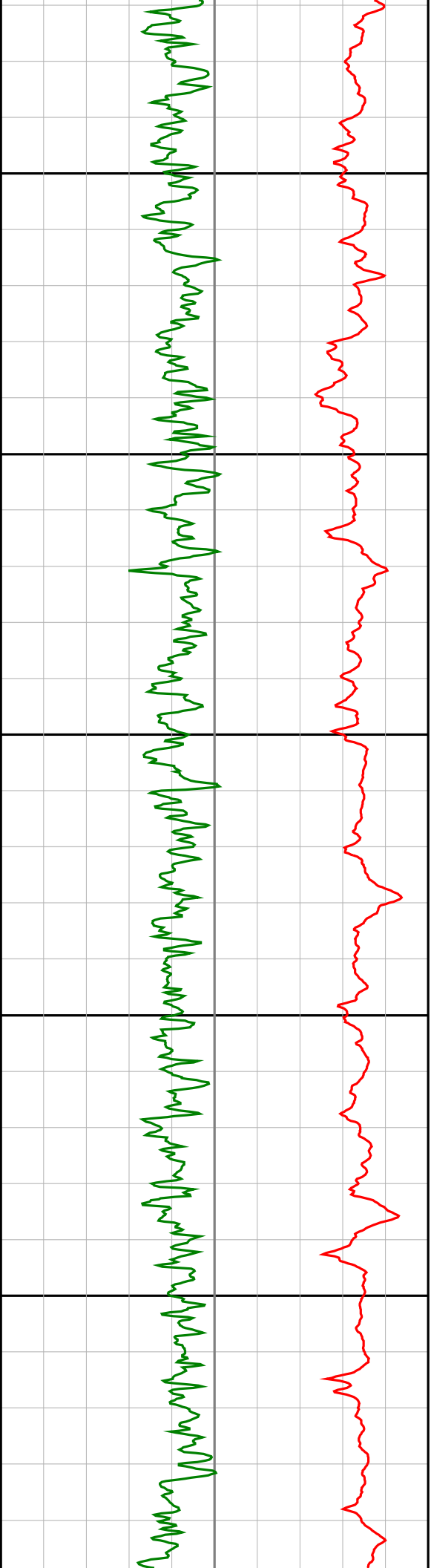
1450

1475

1500







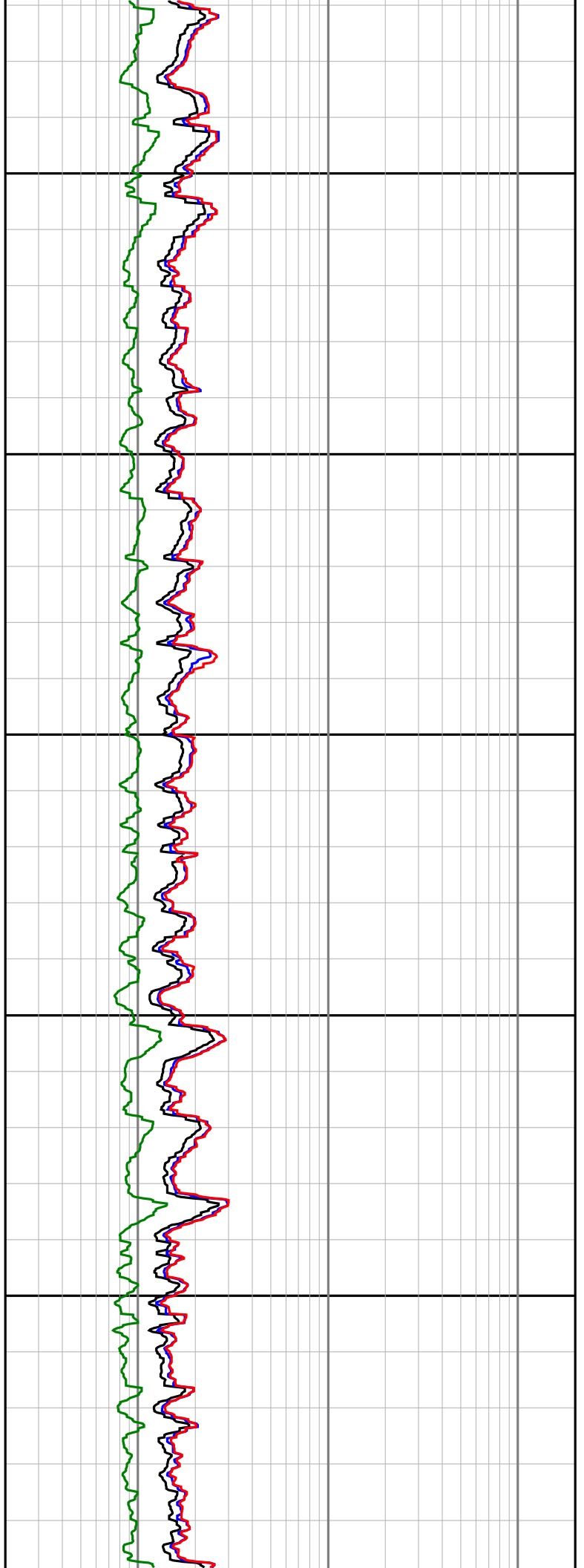
1675

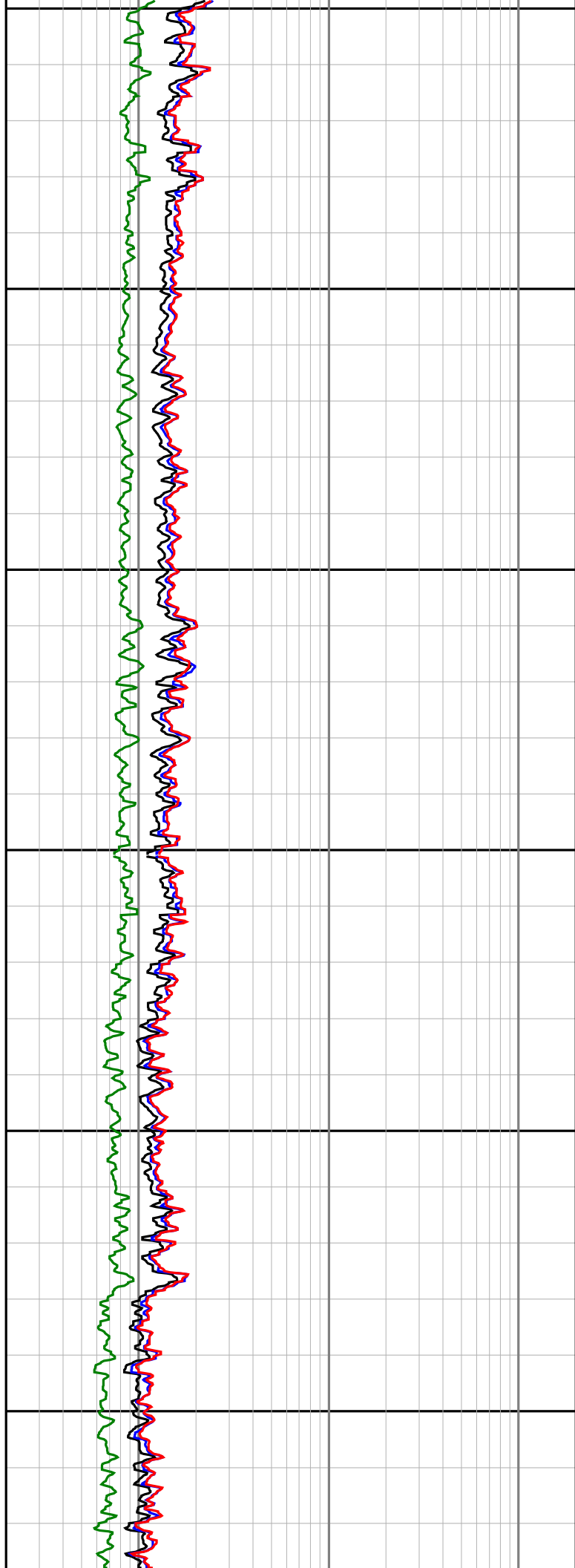
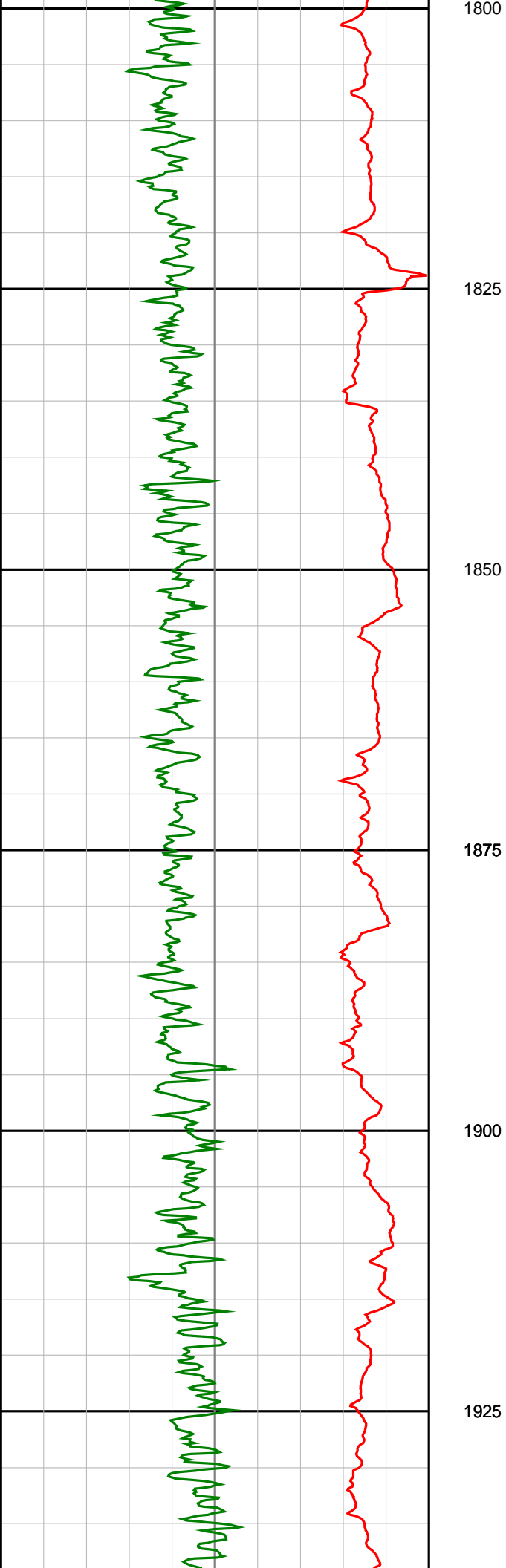
1700

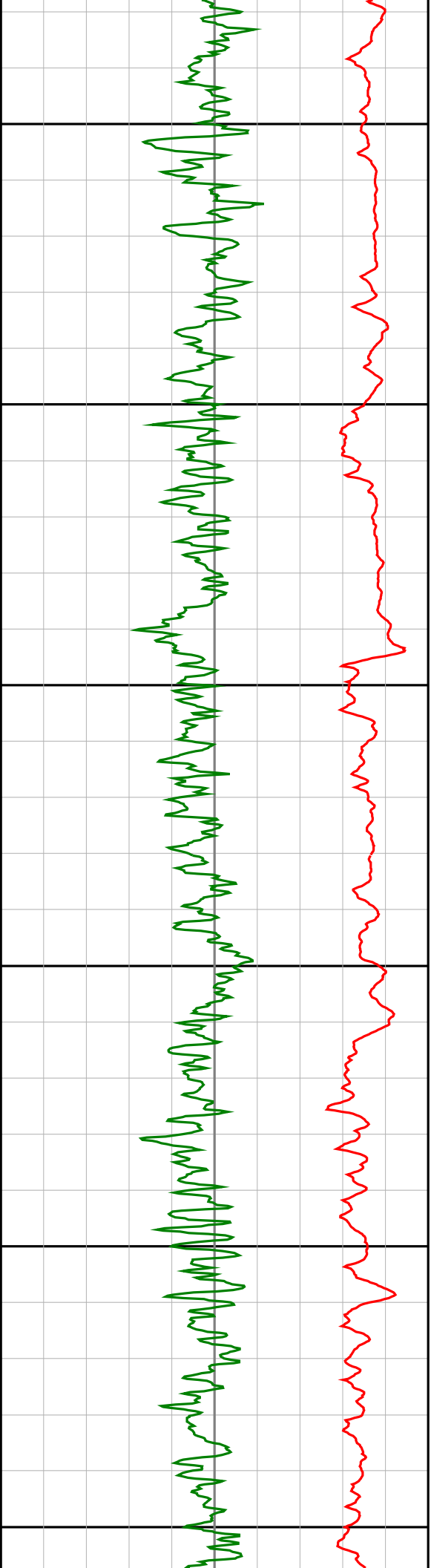
1725

1750

1775







1950

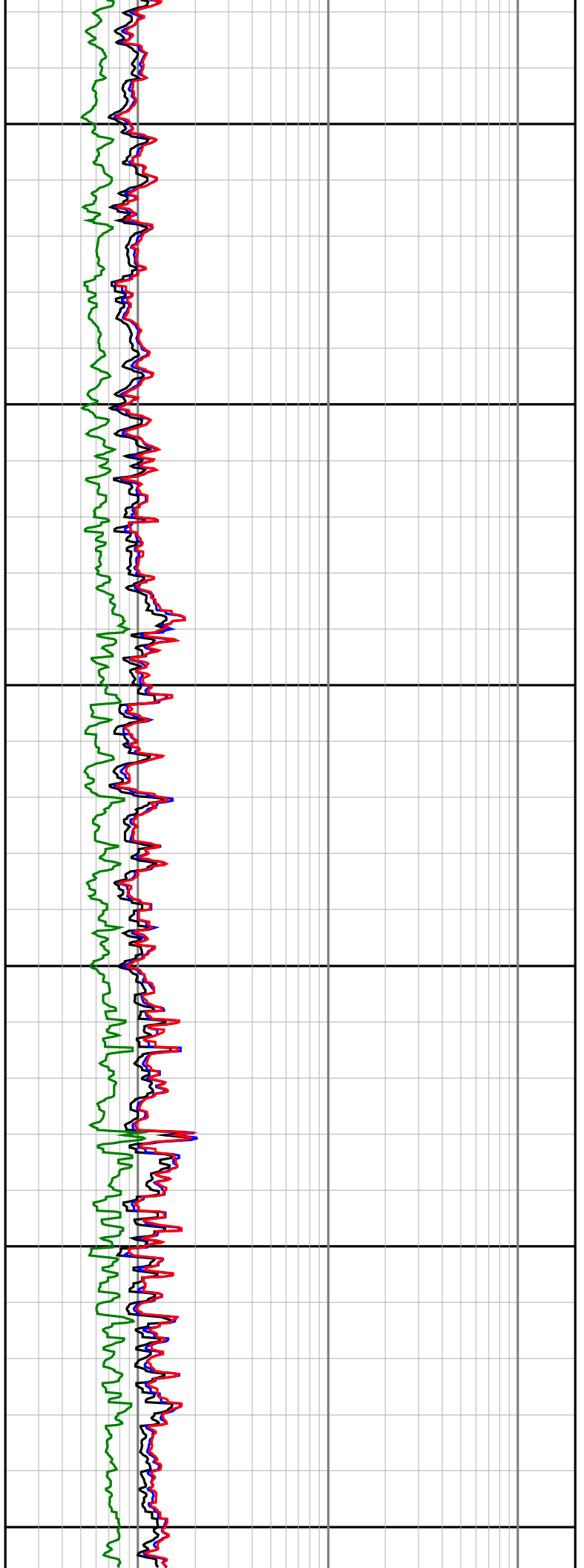
1975

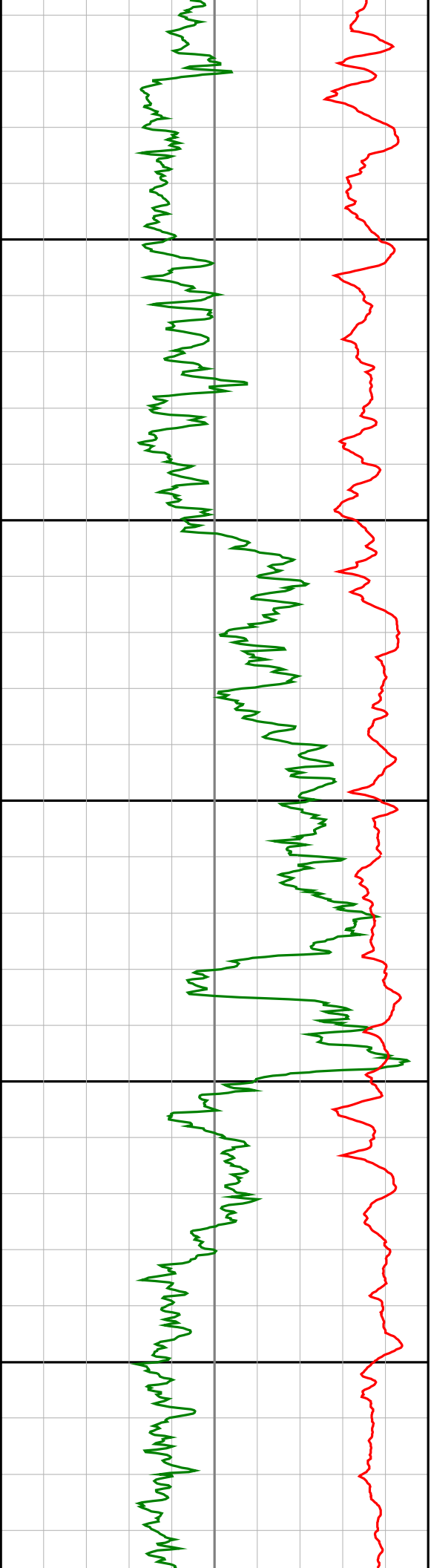
2000

2025

2050

2075





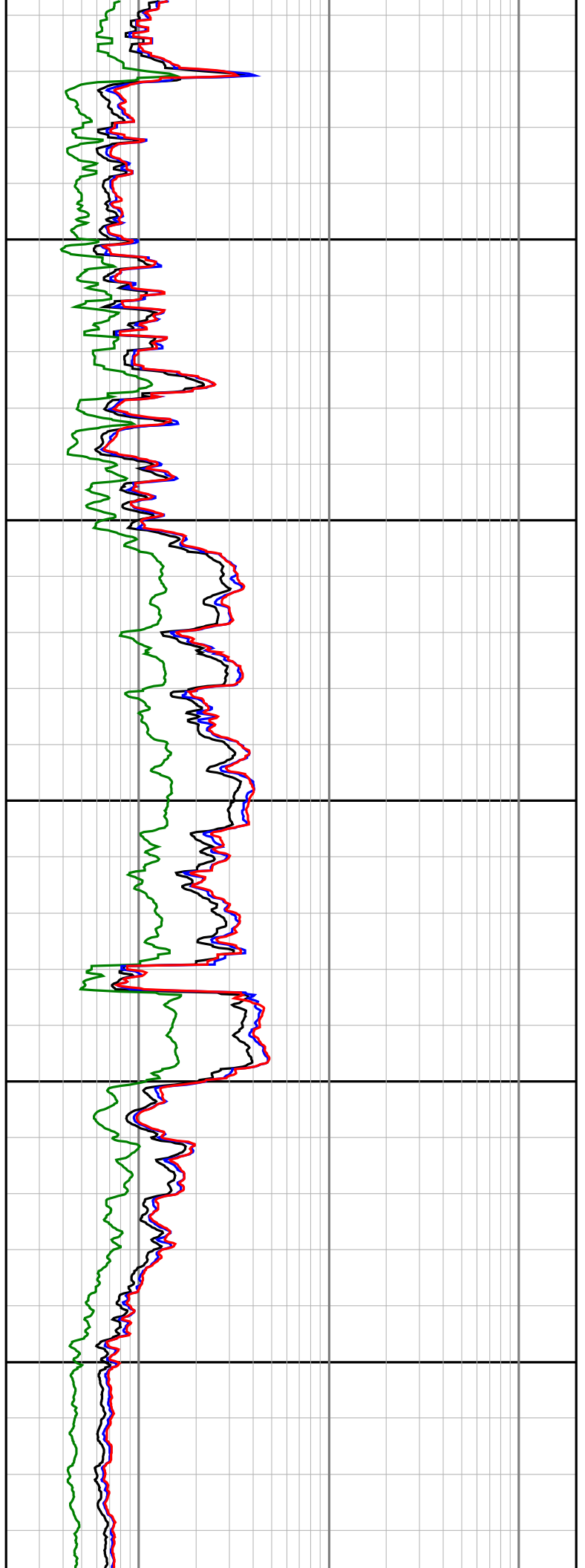
2100

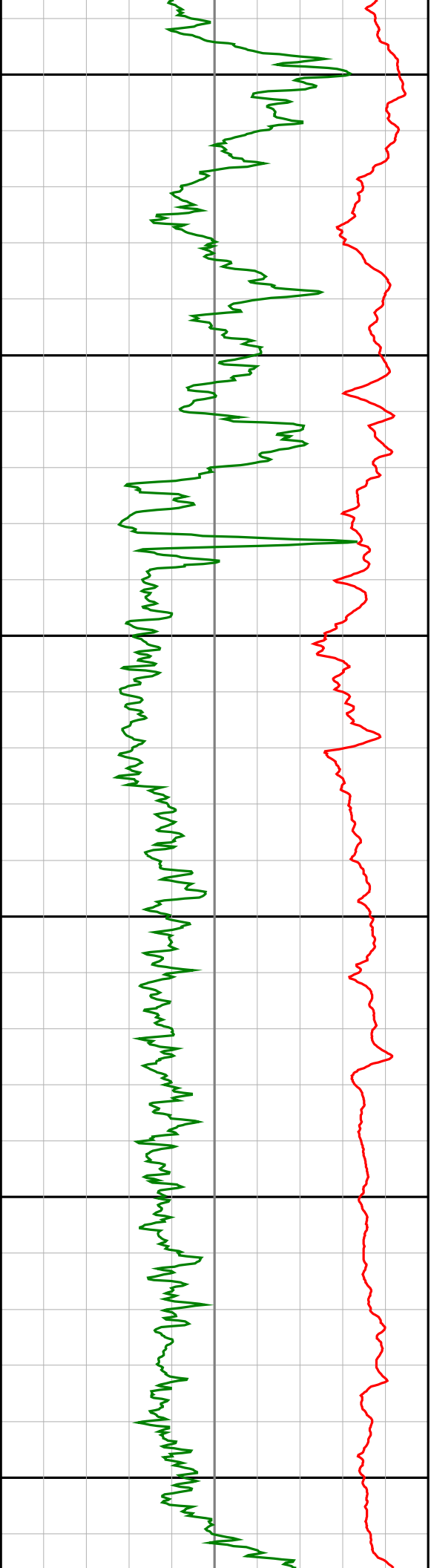
2125

2150

2175

2200





2225

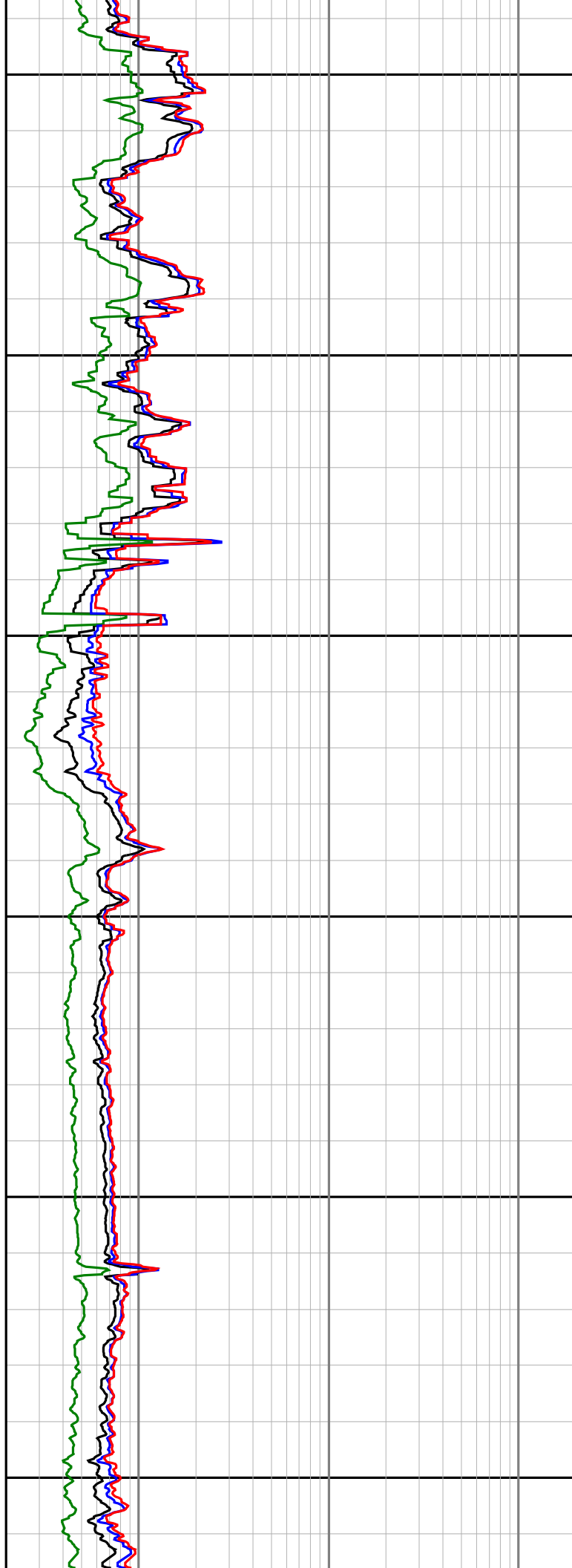
2250

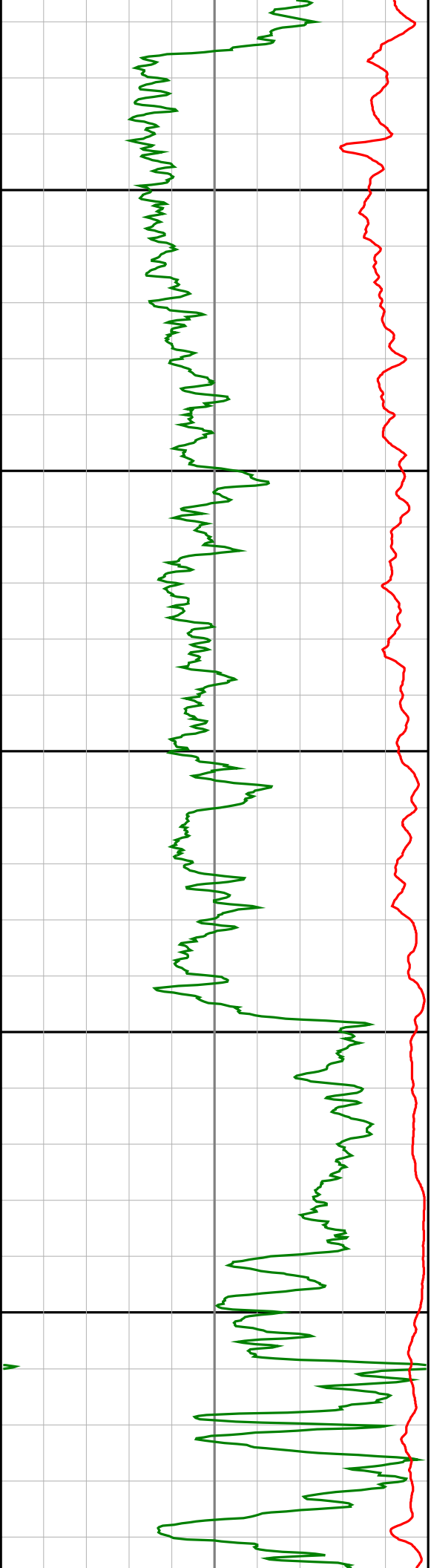
2275

2300

2325

2350





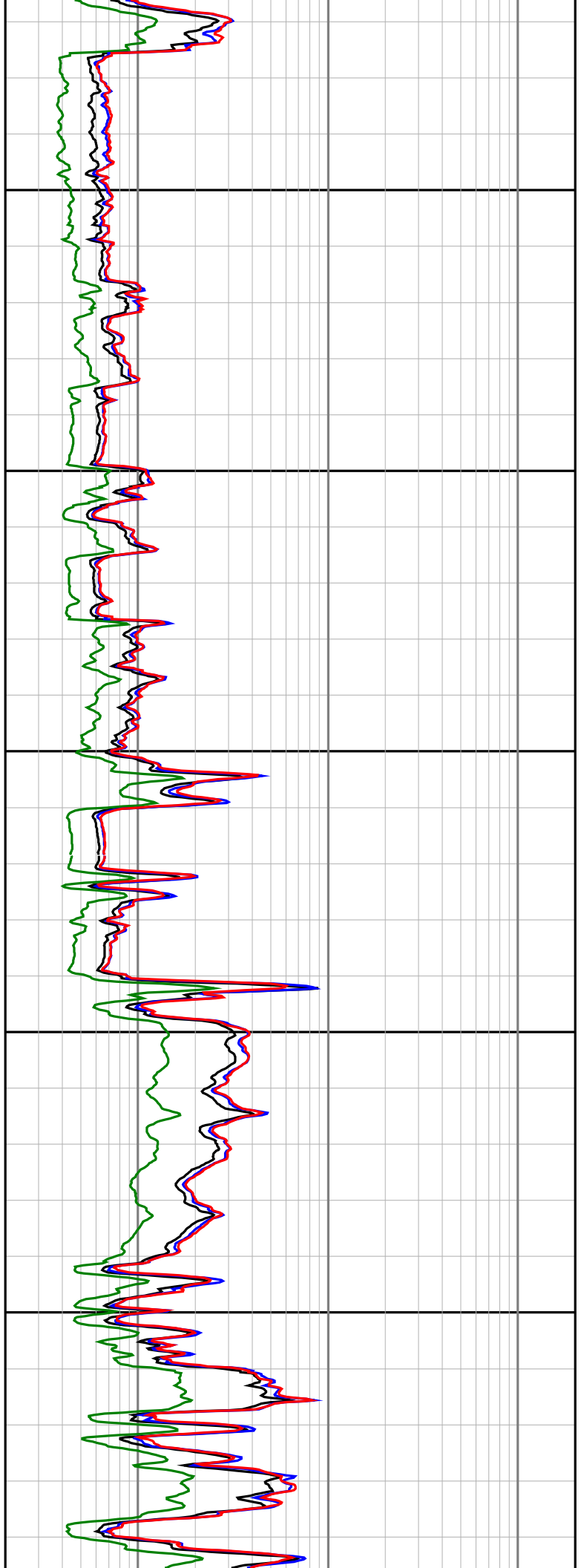
2375

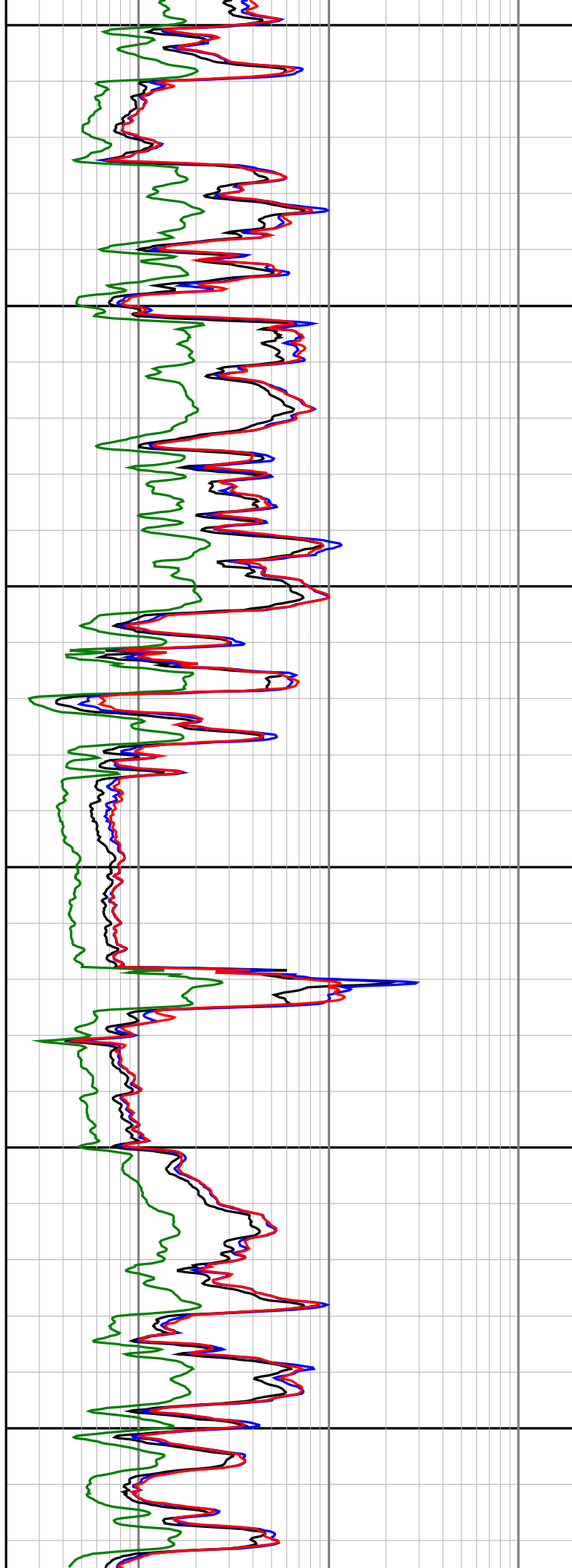
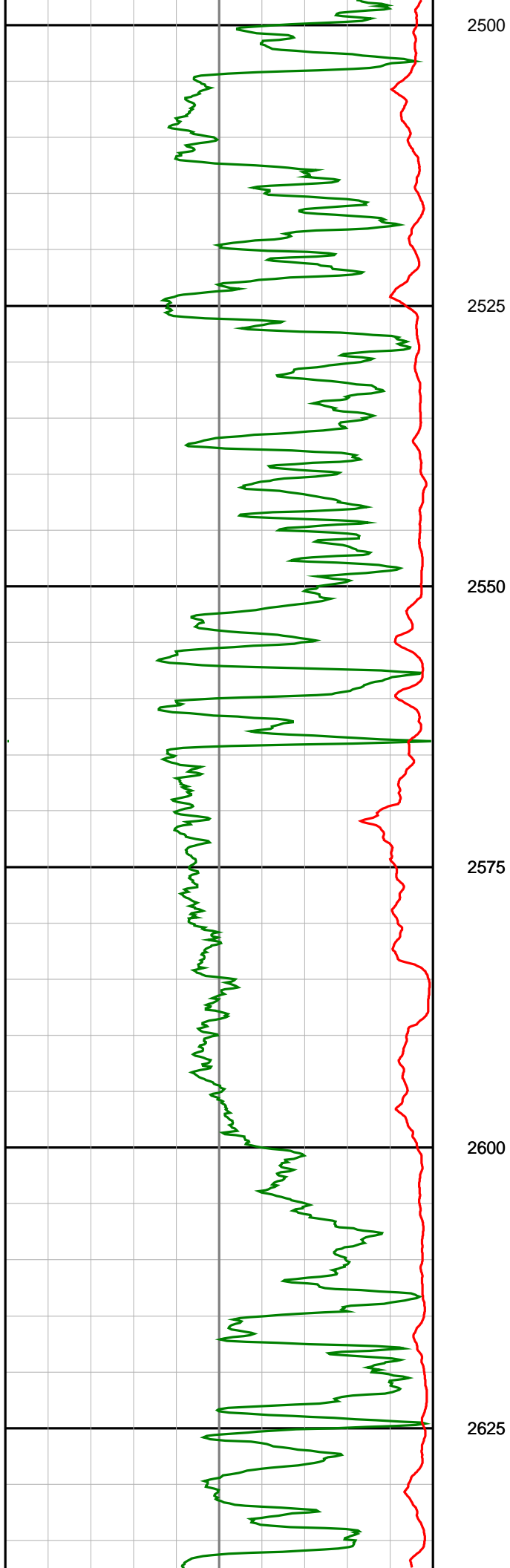
2400

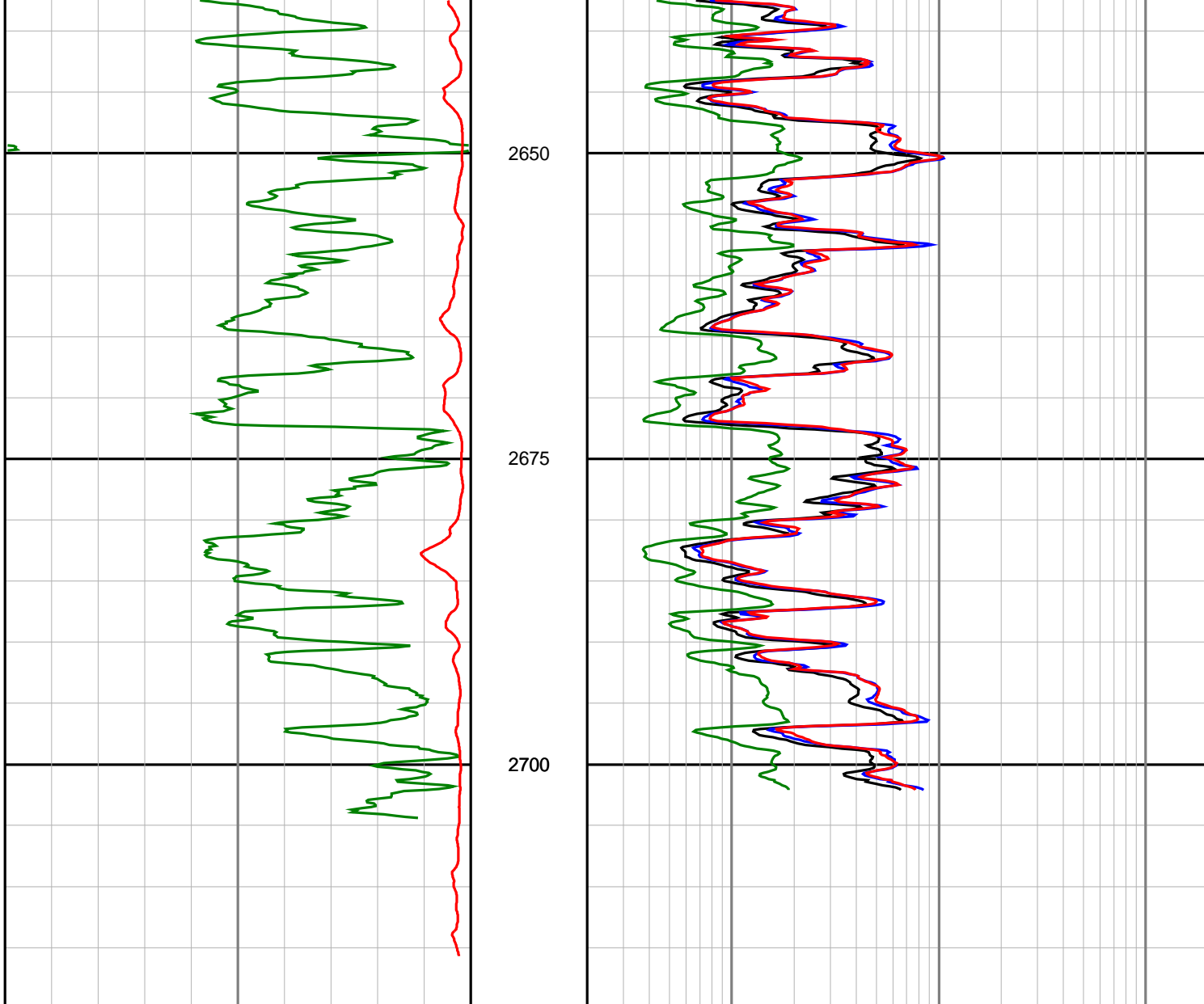
2425

2450

2475







<p align="center">Gamma Ray (SGRC) api</p> <p>0 200</p>	<p align="center">Depth MD 1:500</p>	<p align="center">Ext Shallow Phase Res (SEXP) ohmm</p> <p>0.2 200</p>
<p align="center">Rate Of Penetration (SROP) m/hr</p> <p>500 0</p>		<p align="center">Shallow Phase Res (SESP) ohmm</p> <p>0.2 200</p>
		<p align="center">Medium Phase Res (SEMP) ohmm</p> <p>0.2 200</p>
		<p align="center">Deep Phase Res (SEDP) ohmm</p> <p>0.2 200</p>